

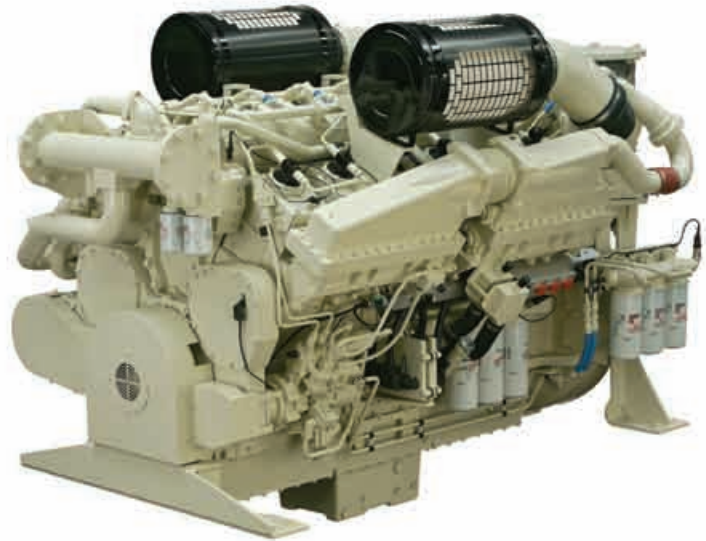
QSK38 Tier 2

MARINE PROPULSION AND AUXILIARY ENGINES



SPECIFICATIONS

ENGINE TYPE	V-12 CYLINDER, 4 STROKE DIESEL
BORE & STROKE	159 mm x 159 mm (6.25 in x 6.25 in)
DISPLACEMENT	38 L (2300 in ³)
ROTATION	COUNTERCLOCKWISE FACING FLYWHEEL
ASPIRATION	TURBOCHARGED/AFTERCOOLED
EMISSIONS	U.S. EPA TIER 2, EU STAGE IIIA, IMO



RATINGS

ENGINE MODEL	OUTPUT POWER			ENGINE SPEED RPM	RATING DEFINITION	FUEL CONSUMPTION	
	kW	HP	kWe*			RATED SPEED L/hr (gal/hr)	ISO** L/hr (gal/hr)
VARIABLE SPEED							
QSK38-M TIER 2	895	1200	-	1800	CONTINUOUS	231.6 (61.2)	164.2 (43.4)
QSK38-M TIER 2	970	1300	-	1800	CONTINUOUS	244.5 (64.6)	176.9 (46.7)
QSK38-M TIER 2	1007	1350	-	1900	HEAVY DUTY	262.0 (69.2)	188.0 (49.7)
QSK38-M TIER 2	1044	1400	-	1800	HEAVY DUTY	266.8 (70.5)	188.0 (49.7)
FIXED SPEED							
QSK38-DM TIER 2	985	1320	950	1500 (50 Hz)	PRIME	247.0 (65.3)	128.9 (34.1)
QSK38-DM TIER 2	1044	1400	1010	1800 (60 Hz)	PRIME	266.5 (70.4)	141.7 (37.4)

* kWe reflects the approximate amount of power available when used in a keel cooled genset configuration

** Average fuel consumption based on ISO 8178 E3 Standard Test Cycle (variable speed models) and ISO 8178 D2 Standard Test Cycle (fixed speed models)

FEATURES AND BENEFITS

Engine Design - Reliable base engine uses common components from the proven K19, K38 and K50 engines. A new cast-iron, ductile single-piece piston with nitride-coated rings and hardened cylinder liner provides excellent durability and long life

Fuel System - Modular Common Rail Fuel System features a simplified design which provides constant high injection pressure regardless of engine speed or load conditions. Benefits include low noise and vibration for quiet operation, idle stability and improved low-end torque

Cooling System - Two-pump, two-loop, low temperature after cooling maximizes efficiency and improves performance. Engine-mounted titanium plate heat exchanger provides superior durability with minimal maintenance requirements

Exhaust System - Triple-wall water-cooled exhaust manifold features an air gap between exhaust gas

and jacket water to maintain thermal efficiency while cooling engine surface temperatures. Design is a fabricated single piece construction that eliminates potential exhaust leakage. Single exhaust collector for reduced installation expense

Air System - Water-cooled turbocharger optimized for vessel operating conditions and safety. Mounted or remote marine grade air cleaner with replaceable canister reduces maintenance cost

Lubrication System - Standard capacity 114 L (30 gal) marine grade oil pan. Handed Cummins spin-on oil filters available for easy accessibility and servicing

EVERY™ PORT.

QSK38 Tier 2

MARINE PROPULSION AND AUXILIARY ENGINES



FEATURES AND BENEFITS

Electronics - 24-volt Quantum System electronics feature a proven CM850 ECM to monitor operating parameters such as fuel consumption, duty cycle, engine load and speed, while providing diagnostics, prognostics and complete engine protection. Simplified electrical customer interface box for all vessel connections to reduce installation complexity

Certifications - Complies with MARPOL 73/78 Annex VI (IMO), U.S. EPA Tier 2 and EU Stage IIIA emissions regulations. Designed to meet the International Association of Classification Societies (IACS) and SOLAS requirements. Consult your local Cummins professional for a complete listing of available class approvals

Optional Equipment

- Integrated C Command panels with a selection of display options are available to monitor and maximize operation and performance
- Optional Cummins ELIMINATOR™ filter replaces disposable lube filters with a self-cleaning centrifuge that reduces maintenance expense and improves engine life
- Premium coolant hose connections
- Duplex lube oil and fuel filtration
- SAE A or B (keel cooled only) accessory drives
- Direct mount front power take-off

DIMENSIONS

LENGTH	2688 mm	106 in	KC
WIDTH	1642 mm	65 in	
HEIGHT	2108 mm	83 in	
WEIGHT	4640 kg	10230 lb	

Dimensions and weight may vary based on selected engine configuration

THE CUMMINS ADVANTAGE

- 24 Hour Customer Support
- Reliable & Durable Products
- Best in Class Life Cycle Cost
- Comprehensive Global Warranty

EVERY QUESTION. ANSWERED.

Marine Website (marine.cummins.com) - Offers the most up-to-date product specifications, installation drawings and technical information as well as answers to frequently asked questions



QuickServe® Online (quickserve.cummins.com) -

Gives easy access to parts and service information for all Cummins engines. Find the information you need with our high-speed search function and your engine's serial number

Cummins Online Product Registration - Register your Cummins engine quickly and easily on the Marine website to ensure quality parts and service

Distributor Expertise - The best source for service, parts and application assistance. To find your nearest Cummins distributor, go to the Worldwide Service Locator at wsl.cummins.com. If you need assistance beyond what your local Cummins professional has offered, contact the Regional Office for your area or email wave.master@cummins.com

Global Support Network - Backed by the strength of Cummins distribution network with marine service locations in 160 countries, Cummins engines include a comprehensive, worldwide warranty



Cummins Inc.
4500 Leeds Avenue - Suite 301
Charleston, South Carolina 29405
U.S.A.

Email: wave.master@cummins.com
Internet: <http://marine.cummins.com>

Bulletin M10052 Printed in U.S.A. REV 11/08
©2008 Cummins Inc.