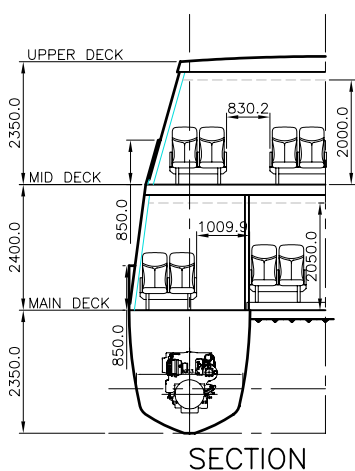
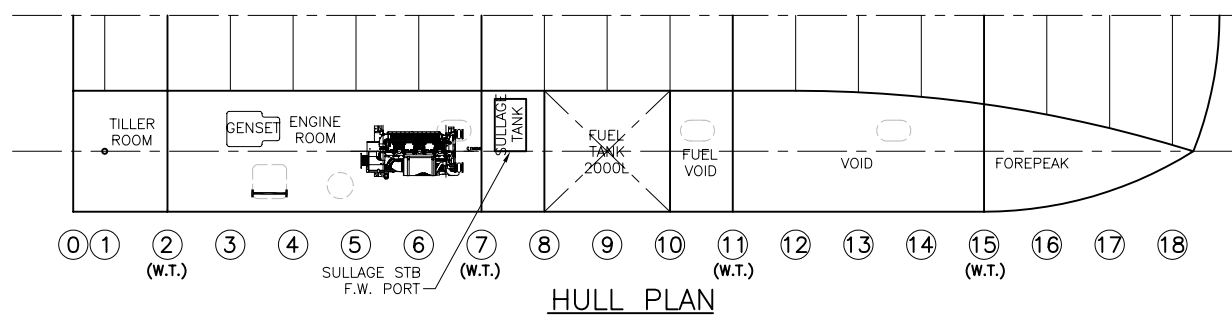
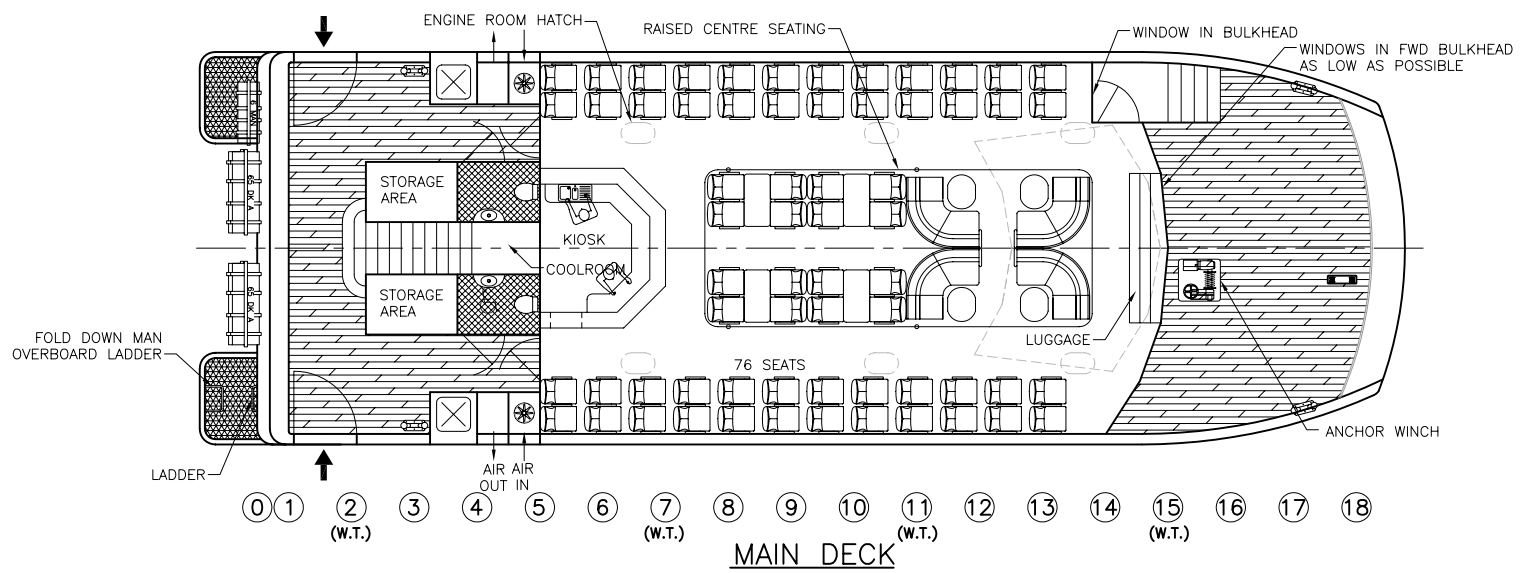
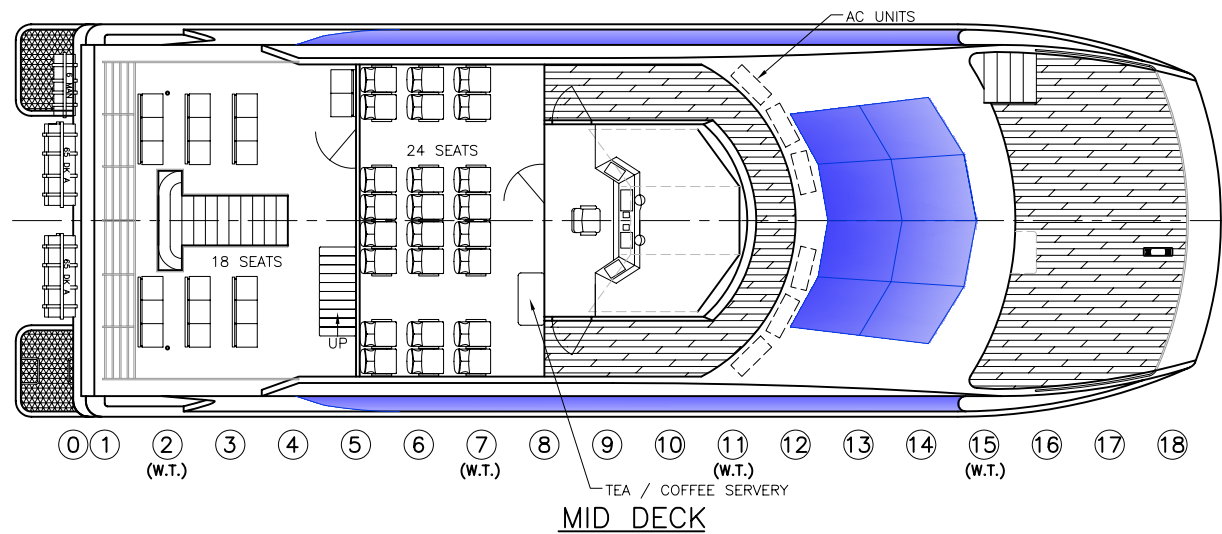
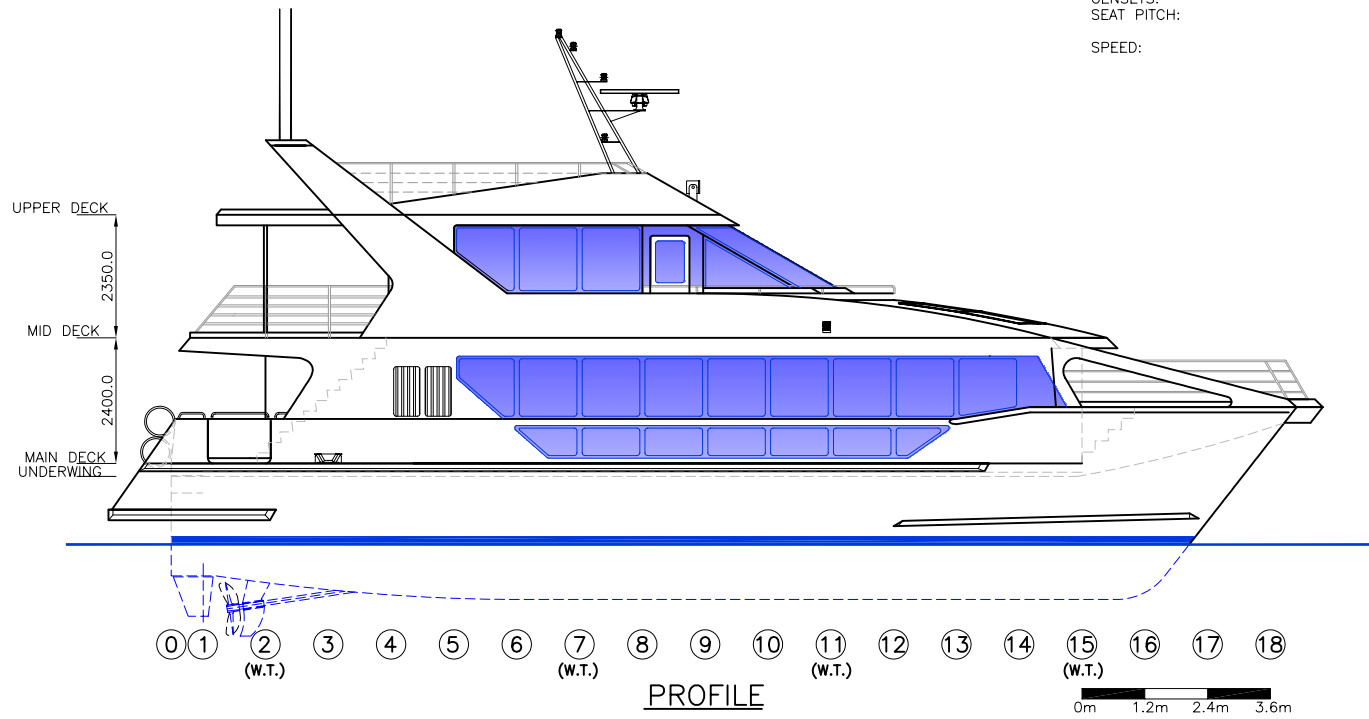


SPECIFICATIONS

OVERALL LENGTH (EXCL SWIMSTEP):	22.00 m
WATERLINE LENGTH:	19.57 m
BEAM (NOT INCLUDING SPONSONS):	7.50 m
DRAFT (APPROX.):	1.20 m
PASSENGERS:	
INTERNAL:	100
EXTERNAL:	18
CREW:	3
CONSTRUCTION:	
HULL:	ALUMINIUM
SUPERSTRUCTURE:	ALUMINIUM
FUEL OIL:	2 x 2000 litres
PROPELLION:	PROPELLERS
ENGINES:	CUMMINS QSK19-M
	2 x 800hp
	2 x 34kVA
GENSETS:	850mm (MAIN DECK)
SEAT PITCH:	900mm (MID DECK)
SPEED:	27 KNOTS



NO.	REVISION	DRAWN	DATE	DESIGN
A	MINOR REVISIONS TO REFLECT SPEC.	J.S.	22.04.05	22m CATAMARAN FERRY
B	RAFT LOCATED TO TRANSOM, CENTRE SEATS RAISED	S.C.	19.05.05	
C	ENGINE REVISED TO CUMMINS/ZF OPTION	J.S.	15.09.05	
				DESCRIPTION
				GENERAL ARRANGEMENT
ALL DIMENSIONS IN MILLIMETRES DO NOT SCALE				
PROPRIETARY INFORMATION - COPYRIGHT All Rights Reserved				
In compiling this document, Crowther Design relies upon information supplied by a number of external sources. The document is supplied on the basis that while Crowther Design believes all the information in it will be correct at the time of publication, it does not warrant its accuracy or completeness and to the full extent allowed by law excludes liability in contract, tort or otherwise, for any loss or damage sustained by the reader, or by any other person or body corporate arising from or in connection with the supply or use of the whole or any part of the information in this document. One boat only from this set of plans				
SHEET NO.		DRAWN		SCALE
101		J.O.		1:75
DESIGN NO.		CHECKED		DATE
719				29.03.05

CROWTHER DESIGN PTY LIMITED (INC. IN N.S.W.)
A.B.N. 21 100 409 489

Tel. no. (02) 9450 0447 International 61 2 9450 0447
Fax. No. (02) 9450 0494 International 61 2 9450 0494
PO Box 204 Newport (Sydney), N.S.W., 2106 Australia