



HOLYHEAD TOWING



AFON DYFRDWY

AIRBUS A380

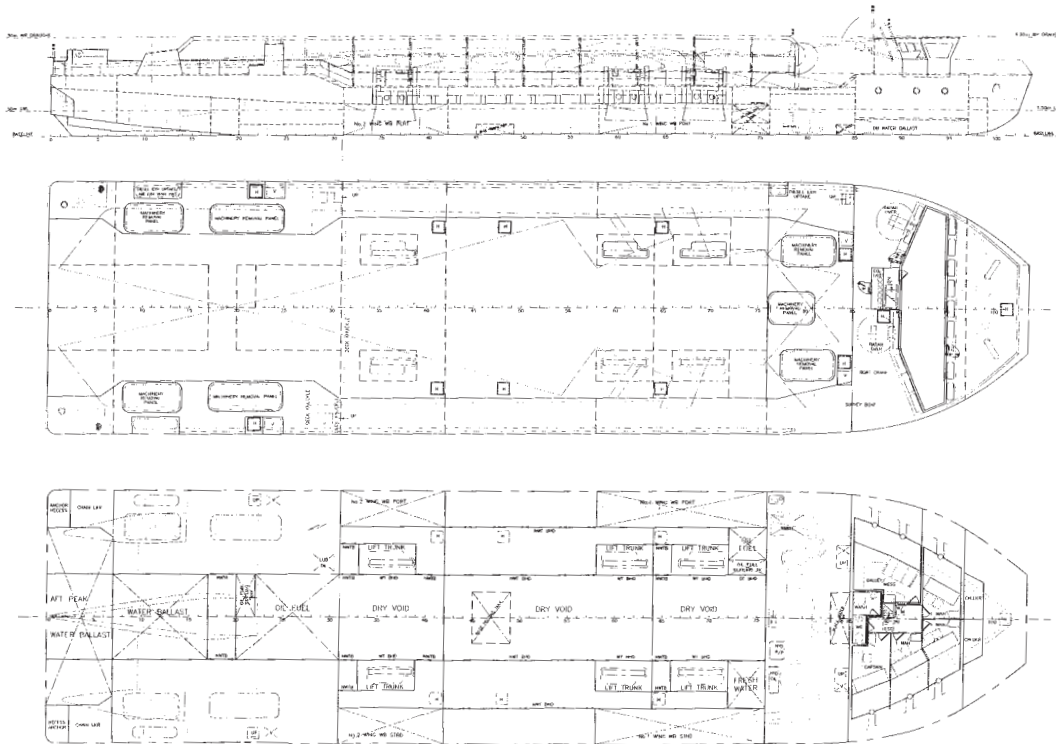
Wing Transport Vessel



TOUGH, DEPENDABLE, WORKBOATS.

AIRBUS A380 WING TRANSPORT VESSEL

for the River Dee



BUILT	McTay Marine Ltd, Bromborough, UK (delivery February 2004)
CLASSIFICATION	A1 IWW 'Roll on Roll off barge', LS "0", Zone 1, 'River Dee Service', +LMC UMS, E.P., A, B. UK MCA Class IX A
DIMENSIONS	LOA 57.6m Beam 14.8m Depth 2.8m Max Draft 1.5m @ 4.3m airdraft DWT 235 tonnes
MAIN ENGINES	2 x Cummins KTA 19 M3 engines, 477 kw each driving Jastram azimuth jet thrusters type W60.
BOW THRUSTERS	2 x Cummins 6 CTA 8.3 M engines, 190 kw each driving Jastram azimuth jet thrusters type W20.
FREE RUNNING SPEED	About 9 knots
NAVIGATION AIDS	River radar, sea radar, 2x VHF radios, Navtex receiver, RTK DGPS, gyro compass, echosounder, electronic survey / route planning/ navigation system, autopilot, telephone, searchlights, tide gauge receivers.
ACCOMMODATION	For 4 people in single cabins.
EQUIPMENT INCLUDES	Low level cargo deck with 300 tonne capacity lift system to lower cargo pallet legs into the hull for low air draft. Electronically controlled ballasting and draft/air draft measurement system.

HOLYHEAD TOWING COMPANY LTD,
Newry Beach Yard,
Holyhead,
Anglesey LL65 IYB, U.K.

Tel: +44 (0)1407 760111
Fax: +44 (0)1407 764531
website: www.holyhead.co.uk
email: towing@holyhead.co.uk